

# BLC News

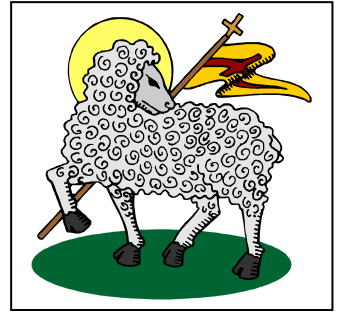
The Newsletter of **Bethlehem Lutheran Church**  
7500 State Road, Parma, Ohio 44134

**January – February 2010**

Please Visit our Website: [www.blc7500.com](http://www.blc7500.com)

**We are a Missouri Synod  
Lutheran Church:**

- † *Believing God's Word!*
- † *Trusting in Jesus Christ!*
- † *Nurturing God's People!*
- † *Caring for Those in Need!*
- † *Reaching Out to the Lost!*



**Our Mission is to Help All People: †KNOW Jesus Christ, †GROW in their knowledge of God's Word, and †EXCEL in Christ-like living!** May the Triune God help us to **KNOW** the mission, **UNDERSTAND** the mission, and **LIVE** the mission!

*Please Share the contents of this Newsletter with Everyone in Your Family!*

## SPECIAL SERVICE TIMES

**January 31 & February 28**

When we celebrated our 105<sup>th</sup> church anniversary on November 15, 2009, *we were all together for one service*. Many said it was very enjoyable and uplifting! Therefore, please note these dates and times; then plan to join us:

- **Sunday, January 31 and February 28** – the *LAST Sunday of each of those months*:
  - **Divine Service** → 9:00
  - **Bible Class and Sunday School** → 10:30
- Even if you have another regular routine, **PLEASE plan now to join us on those dates!**

## "I Do" – AGAIN!

### **Relationship Growth & Renewal**

Please make plans NOW to join us at Bethlehem on **Saturday, February 13** to *refresh your marriage* or (for singles) *prepare for your future marriage*:

- **Mini Relationship Workshop**: 3:00 – 4:45
  - Adults and Youth – attend the workshop in the Christian Life Room
  - Children – to the Upper Room for games / movie
- **Marriage Renewal Service**: 5:00
  - Excellent, joyful wedding music – *by Mr. James Alfieri*
  - ALL ages are invited to attend!

- **Dinner: 6:00 at Bethlehem**:
  - **Adults and Youth** – a nice catered meal in the CLR
  - **Children** – pizza in the upper room
  - **Cost for the meal**:
    - Per Adult/Youth: \$10.00
    - Per Child: \$3.00
- **Registration Forms** → *by our Main Entrance*:
  - Please complete your form A.S.A.P.
  - Return it to the church office with your payment by **Sunday, February 7, 2010**

**Can You Help?** We need *at least two people* – youth, single, widow, widower – to supervise the children. *If you can help, please contact the church office.*

## **An Idea for YOUNG ADULTS**

Would you like to get together once a month to meet other young adults and study the Bible or discuss a current topic in connection with the Bible? The gathering could also include food, friends, etc. Once our group was established, we could invite those from another church to join us. If you are a young adult and interested, *help Pastor plan the first event.*

## **Let's Keep a Good Thing Going**

Thanks to Tammy Cole and Lisa Raines, a nice time of lunch and fellowship took place after each midweek Advent service. Watch for something similar – *maybe once a month* – in the near future: Bible study, lunch, fellowship, etc.

## What Are YOU?

- **An Atheist or Agnostic!**
- **A Believer – but have never read through the Bible!**
- **A Christmas and Easter Attendee!**
- **A Seeker of the Truth!**

**Whatever YOU are; whoever YOU are; wherever YOU live; whatever YOU do; whatever YOU have; whatever YOU need; YOU will benefit from the Bible!**

**God's answer to why the Bible is SO important ↓**

- † <sup>NIV</sup> **2 Timothy 3:15** "...the holy Scriptures, ...are able to make you wise for salvation through faith in Christ Jesus."
- † <sup>ESV</sup> **1 Peter 1:23** "...you have been born again, not of perishable seed but of imperishable, through the living and abiding word of God..."
- † <sup>NAS</sup> **John 8:31-32** [Jesus said:] "If you abide in My word, *then* you are truly disciples of Mine; <sup>32</sup> and you shall know the truth, and the truth shall make you free."
- † <sup>ESV</sup> **Acts 20:32** "And now I commend you to God and to the word of his grace, which is able to build you up and to give you the inheritance among all those who are sanctified."
- † <sup>NAS</sup> **Matthew 4:4** [Jesus said:] "It is written, 'Man shall not live on bread alone, but on every word that proceeds out of the mouth of God.'"

**NOW, knowing the vital importance of God's Word for everyone who wants to go to heaven, I †invite, †urge, and †challenge you to follow this simple Bible reading program! YOU WILL BE BLESSED!**

- **Get a Bible** – *your own or ask us for one!*
- **Skim over a few questions** – *so you can read with purpose, to find the answers!*
- **Read ONE chapter each day** – *Bible chapters are short!*
- **This page BEGINS the program:**
  - Each ½ page will be short, *concise!*
  - Get a new ½ page each week:
    - At Bethlehem
    - At [www.blc7500.com](http://www.blc7500.com)

- **Complete the Bible** – *in 4 ½ years:*
  - 1,189 Chapters in the Bible
  - Read 5 days each week, *Monday – Friday*, 260 days each year, 234 weeks
  - 1,189 divided by 260 = 4 ½ years

**KNOW and GROW → Week 1 Schedule & Questions:**

**Monday January 4 Genesis 1**

- A simple reading of Genesis 1 shows that God created in *6 ordinary days*. What *two words* point to 24-hour days? \_\_\_\_\_
- Before the fall into sin, were people and animals vegetarians? Y N

**Tuesday January 5 Genesis 2**

- Notice verse 4; *Genesis 2 is a more detailed account of God's work in Genesis 1*.
- Did God *clearly* tell Adam not to eat from the tree of the knowledge of good and evil? Y N

**Wednesday January 6 Genesis 3**

- The serpent tempted the woman to \_\_\_\_\_ God's Word; *he does the same today!*
- Look for the fall, passing the blame, the first promise of the Savior, the consequences of sin, and the first blood sacrifice.

**Thursday January 7 Genesis 4**

- Cain and Abel both brought an offering. "The contrast is not between an offering of plant life and an offering of animal life, but between a careless, thoughtless offering and a choice, generous offering. Motivation and heart attitude are all-important..." (CSSB).
- See Proverbs 3:9-10; 2 Corinthians 9:6-7

**Friday January 8 Genesis 5**

- Adam & Eve were made in the *sinless* likeness of \_\_\_\_\_. Then, after the fall into sin, *sinful* Adam had a son in his \_\_\_\_\_ likeness. See Psalm 51:5; Romans 5:12
- What about all the *people* and *years*? It's God's way of:
  - Giving us an *unbroken* genealogy from Adam → Noah / the flood.
  - Helping us know that many people *lived much longer* near the beginning.
  - Telling us *how long* from Adam to the flood: 1,656 years (add the numbers; then add 100, see Genesis 7:6).

## Special Services in 2010

Please attend every week for ✦nourishment, ✦growth, ✦guidance, and ✦peace! Please make a special point of attending these special services *AND invite a friend*:

- ✦ Marriage Renewal → February 13 at 5:00
- ✦ Ash Wednesday → February 17 at 11 & 7
- ✦ Palm Sunday → March 28 at 8:15 & 10:45
- ✦ Maundy Thursday → April 1 at 11 & 7
- ✦ Good Friday → April 2 at 7:00
- ✦ Easter Sunday → April 4 at 7:00 & 10:45
- ✦ Ascension → May 13 at 7:00
- ✦ Day of Pentecost → May 23 at 8:15 & 10:45
- ✦ The Holy Trinity → May 30 at 8:15 & 10:45
- ✦ Reformation → October 31 at 8:15 & 10:45
- ✦ All Saints Day / Commemoration of the Faithful Departed → Nov. 7 at 8:15 & 10:45
- ✦ Thanksgiving Eve → November 24 at 7:00
- ✦ Christmas Eve → December 24 at 6:00
- ✦ Christmas Day → December 25 at 10:00
- ✦ New Year's Eve → December 31 at 6:00

We also plan to have extra services during Lent and Advent, and a non-Sunday option over the summer.

**PLEASE JOIN US – for your life and the life of the world!**

## Mission Trip Report

*Did you know about Brian's trip?*

Hello, many of you may already know that my brother-in-law Mark and I recently went on a trip to Biloxi, Mississippi to help build houses for needy families. The houses were built through **Thrivent Builds** and **Habitat for Humanity**.

I just wanted to take a moment to let anyone who is interested in volunteering know that they can find information about the organization and future trips at [www.ThriventBuilds.com](http://www.ThriventBuilds.com) There are builds as close as the Cleveland area or as far away as New Zealand.

I found this trip to be a great opportunity to help other people, meet other wonderful Christians from around the country, and, *most of all*, to serve God! Remember what Jesus said to His followers: *"You are the light of the world.... Let your light so shine before men, that they may see your good works and glorify your Father in Heaven."* (Matthew 5: 14, 16)

Brian Zeleznikar



## Notes from the Treasurer

Mr. Jim Schabel

- Praise, Honor and Glory be to God Almighty!!
- I would like to thank the congregation for allowing me to serve as treasurer the past two years and look forward to serving in the future.
- The 2010 Budget will be finalized in late January. Copies may be obtained by contacting me at: 216-323-7655 or [jim614@sbcglobal.net](mailto:jim614@sbcglobal.net)
- As Dr. Giessler prepares for his missionary journey to Africa in March to teach the seminary students, please keep him in your prayers and consider supporting him financially. A special fund was established last year. Simply mark on your offering envelope in the "Other" space provided: "Dr. Giessler" or "Agency 07"

## Service Cancellation Policy



Normally we will never cancel a service; however, if we do, *we will call our members who normally attend!* Therefore, please disregard any messages on your television in regard to Bethlehem Lutheran

Church being closed (*remember, there are at least three churches with that same name in the greater Cleveland area!*) If you are ever in doubt, call the church (*we will indicate a closing on our voice mail*), check our website, or call your deacon!

## Please Learn and Grow with Us

*Everyone is Invited to Benefit!*

In keeping with our church mission statement, we want you and *all people* to **KNOW** Jesus Christ and **GROW** in the Bible! Since God works through the Bible to ✦ open eyes to the truth, ✦ lead to repentance, and ✦ connect to Jesus, these opportunities are for those who *do not yet believe to KNOW* and those who *do believe to GROW*:

### Sunday Mornings at 9:30

*Except 1-31 & 2-28 at 10:30*

**Classes BEGIN on January 3, 2010**

- ✦ **Lutheran Basics** – *All who are interested in the saving truth are encouraged to attend!*
  - Members, visitors, potential members, the curious, etc.
  - Location → Upper Room – *up the steps, above the Little Lamb room.*
- ✦ **The Angel of the Lord** – *Find the pre-incarnate Christ in the Old Testament!*
  - All are welcome!
  - Location → Christian Life Room – *off the hall, across from steps.*
- ✦ **Sunday School** – *For all children 3 years old through 5<sup>th</sup> grade!*
  - Location → Lower Level – *down stairs.*
  - We are a *home-centered, church-supported* congregation. That means we desire to *equip our parents to teach their children at home.*
  - Sunday School, then, is not a child's only Bible learning *but supports what the child is already learning at home.*
- ✦ **Sunday School Teacher Training** – *The last Sunday of each month at 10:45.*
  - Teachers *should* attend, parents *may also* attend!
  - Watch the Weekly News for more details!

## Wednesday Evenings at 7:00

**For WOMEN**

**Classes BEGIN on January 13, 2010**

- ✦ **LIES WOMEN BELIEVE** *and the truth that sets them free!*
  - We are like Eve. We have all experienced defeats and failures, trouble and turmoil. We have all experienced a selfish heart, a shrewish spirit, anger, envy and bitterness. And we ache to do things over, to have lives of harmony and peace. The study will expose those areas of deception most commonly believed by Christian women:
    - **Lies about themselves:**  
*I should not have to live with unfulfilled longings!*
    - **Lies about sin:** *I cannot walk in consistent victory over sin!*
    - **Lies about marriage:**  
*If I submit to my husband, I will be miserable!*
    - **Lies about emotions:** *I can't control my emotions!*
    - **Lies about circumstances:**  
*I just can't take it anymore!*
  - Come and learn about God's grace and forgiveness!

### Saturday Mornings at 8:30

**The LAST SATURDAYS of January → October**

**Everyone is Welcome to Attend**

- ✦ **Fellowship Saturday**
    - 8:30 – 9 → Breakfast and Fellowship
    - 9 – 10:30 → Separate Studies: One for Males and one for Females
- If you are planning to bring a breakfast item:**
- Please sign up
  - A sign-up sheet should be available on Sundays → *on a table in the narthex*

## Membership Changes

*Since our Last Newsletter*

### Removals:

*By transfer to his Eternal Home:*

**Fred Engelman**



*By transfer to Calvary Lutheran:*

**Rob, Shelley, Derek & Emma Ciha**

*By request:* **Bob Coldiron**

*By not attending:* The following people have not attended Bethlehem for over two years (*in most cases well over five years*) and have not responded to any of our many offers of spiritual assistance:

**Michael & Jackie Cox; Joseph Dafo; Linda, Kelly & Victoria Delpra; Christine Dunlap; Ron Dye; Beth Edwards; William, Chris, William, John & Michael Hetzel; Fred, Michele, Nicole & Rachel Kerling; Lisa Mason; Steve Mattes; Amy Nenadal; Allison Nenadal; Dieter Schaefer; Walter Schaefer; Joy, Michael, Chase & Jude Stanley; Rick, Ann Marie, Lewis, Sarah, Samantha, April, Kayla & Annie Stevens; Heidi Tischler; Brian & Willia Townsley.**

**Our congregation exists to help all people → KNOW Jesus Christ, → GROW in God's Word, and → EXCEL in their Christian lives!**

**We are always ready to help ✦ current members, ✦ former members, ✦ childcare families, or ✦ anyone who desires to KNOW, GROW, and EXCEL!**

## Memorials Received

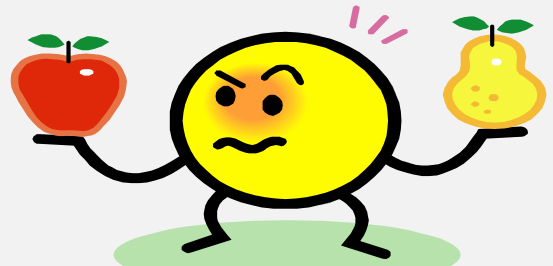
### In Memory of Phyllis Schabel:

Paul Martens

### In Memory of Fred Engelman:

Lois Gergely	Marilyn McClintock
Verna Hirzel	M/M Jack Mohney
Fred Hoffman	M/M Ed Pysz
Kathy Kinsley	M/M Greg Slepko
Paul Martens	M/M Don Smith

## How Should I Proceed?



- **Make your relationship with the Triune God the top priority of your daily life** – *from that relationship will flow great blessings to every other area of your life!* (Matthew 6:33)
- **Attend Worship every week** – Hebrews 10:25
- **Attend worship with a purpose** – John 4:23-24
- **Need a ride to church** – *let us know!*
- **Receive Pastor's sermons on line** – send him any e-mail with the word "Subscribe" in the subject line.
- **Spend daily time in the Word** – *we need it MORE than food for our bodies!* Begin using the KNOW and GROW program explained in this newsletter!
- **Sick at home** – *let us pray for you!* (James 5:16b)
- **In the hospital** – *let us know, so we can visit you!* (Matthew 25:34-40)
- **Unable to attend** – *let us bring you the spiritual life-nourishing Word and Sacrament!*
- **Concerned about going to heaven** – *let's talk!*
- **Have a new address, phone, e-mail** – *let us know!*
- **Birthday or anniversary correction** – *let us know!*
- **Son or daughter away at college or in the military** – *give us his or her name, new address, and e-mail!*
- **A friend who wants to know Jesus** – *let us help!*
- **Interested in baptism** – *let us know!*
- **Want to get married** – *talk to Pastor!*
- **Want to grow as a Christian** – *join us in education!*
- **Willing to serve** – *tell your interests and abilities!*
- **Moving out of our area** – *let us help you find a new church home!*
- **Have a concern with something at Bethlehem** – *make your thoughts known!*
- **Want to join another church** – *make your request☺!*
- **Want to be removed from Bethlehem's membership list** – *let us know☺!*

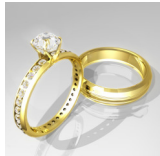
### January *Physical* Birthdays

- 2 Nona Meier
- 5 Darrin Liddy  
Gail Lisowski
- 6 Elizabeth Hegedus
- 7 Alex Cole
- 11 Michelle Meikle  
Kristen Pendley
- 12 Thomas Tomasch
- 14 Mark Dennison Jr.
- 17 Natalia Ford  
Renee Werner
- 18 Carol Prahst  
Connor Ring  
Lillian Ring
- 19 Greg Seefeld
- 22 Doris Chmielewski  
Michele Kutolowski  
Jeff Lessa
- 23 Angelique Cuba  
Nicole Figueroa  
Sam Nakashige
- 24 James Szell
- 27 Jeremy Ragone
- 28 Rosemarie Hoecker  
Scott Sala  
Ernest Raymond
- 29 Mary Kay Pienta
- 30 Brittny Schnur



### January *Wedding* Anniversaries

- 7 Phillip & Inez Giessler (10<sup>th</sup>)
- 11 Ron & Betty Cook (32<sup>nd</sup>)
- 24 Chris & Leanne Davis (12<sup>th</sup>)
- 24 Ray & Grace Dmytriw (51<sup>st</sup>)



### February *Physical* Birthdays

- 1 Connie Pysz
- 3 Megan Harper
- 6 Helga Bartel
- 7 Martin Mild  
William Todten
- 9 Betty Cook  
Klaus Kitzler  
Klara Seefeld
- 14 Lyndsey Mild  
Judy Woidke
- 15 Kevin Mild
- 17 Justin Schnur
- 19 Miranda Weekley
- 22 Logan Liptak
- 24 James Alfieri  
Kathy Strauss
- 25 Mariah Haslem
- 27 Susanna Tischler
- 28 Katharina Blum



### January *Spiritual* Birthdays

*(born of the Spirit – through Baptism and the Word)*

- 1 Tim Raines
- 10 Nicole Cannonie  
Melissa Pendley
- 12 Tami Taylor
- 14 Jim Ford
- 18 Blake Kelley  
Mark Kelley  
Megan Kelley  
Bonnie Moyer
- 22 Jack Pienta
- 23 Evan Davis
- 27 Nicole Belasco  
Matt Taylor
- 28 Nicole Cook  
Darrin Liddy
- 29 Luke Liptak
- 31 Alex Cole



### February *Spiritual* Birthdays

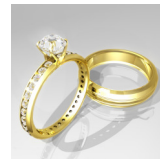
*(born of the Spirit – through Baptism and the Word)*

- 3 Dolores Susnik
- 7 Regina Mild
- 11 Kristen Pendley
- 13 Klaus Kitzler
- 14 Holly Belasco  
Mark Dennison Jr.
- 15 Renee Werner
- 16 Wendy Ragone
- 17 Paul Moyer Sr.
- 20 Jeff Lessa
- 26 Mary Kay Pienta
- 28 Michelle Meikle



### February *Wedding* Anniversaries

- 4 John & Carole Gellings (54<sup>th</sup>)
- 6 Edmund & Christl Kissinger (50<sup>th</sup>)



## FUTURE Newsletters



We are trying to reduce our newsletter mailing expenses; therefore, **beginning with the next issue**, we would like to e-mail a copy to anyone who is on-line.

If you are willing to receive your Newsletter via e-mail, please send your request to: [Secretary@blc7500.com](mailto:Secretary@blc7500.com)

For those who are not on-line we will have a copy of the NEXT newsletter with your name on it available in the Narthex on **the last Sunday in February** AND **the first Sunday in March**. Please pickup YOUR copy!

Thanks!